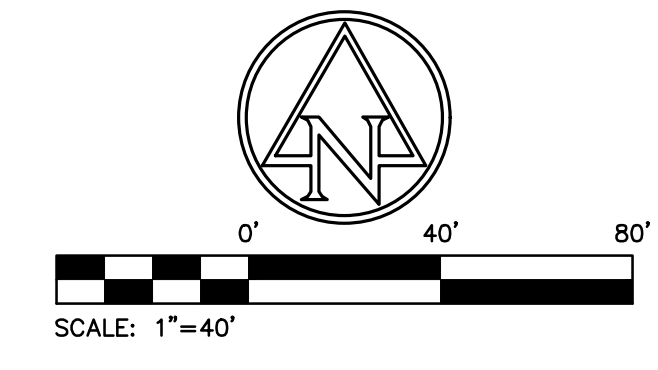


PLOT SCALE: 1:1 EDIT DATE: 8/28/17 11:23 AM EDITED BY: KCANTER DRAWING FILE: P:\2018\01279\0 DRAWINGS\CIVIL\CONSTRUCTION DOCUMENTS\2018.01279.DEC\C400.UP.DWG



**EXISTING LEGEND**

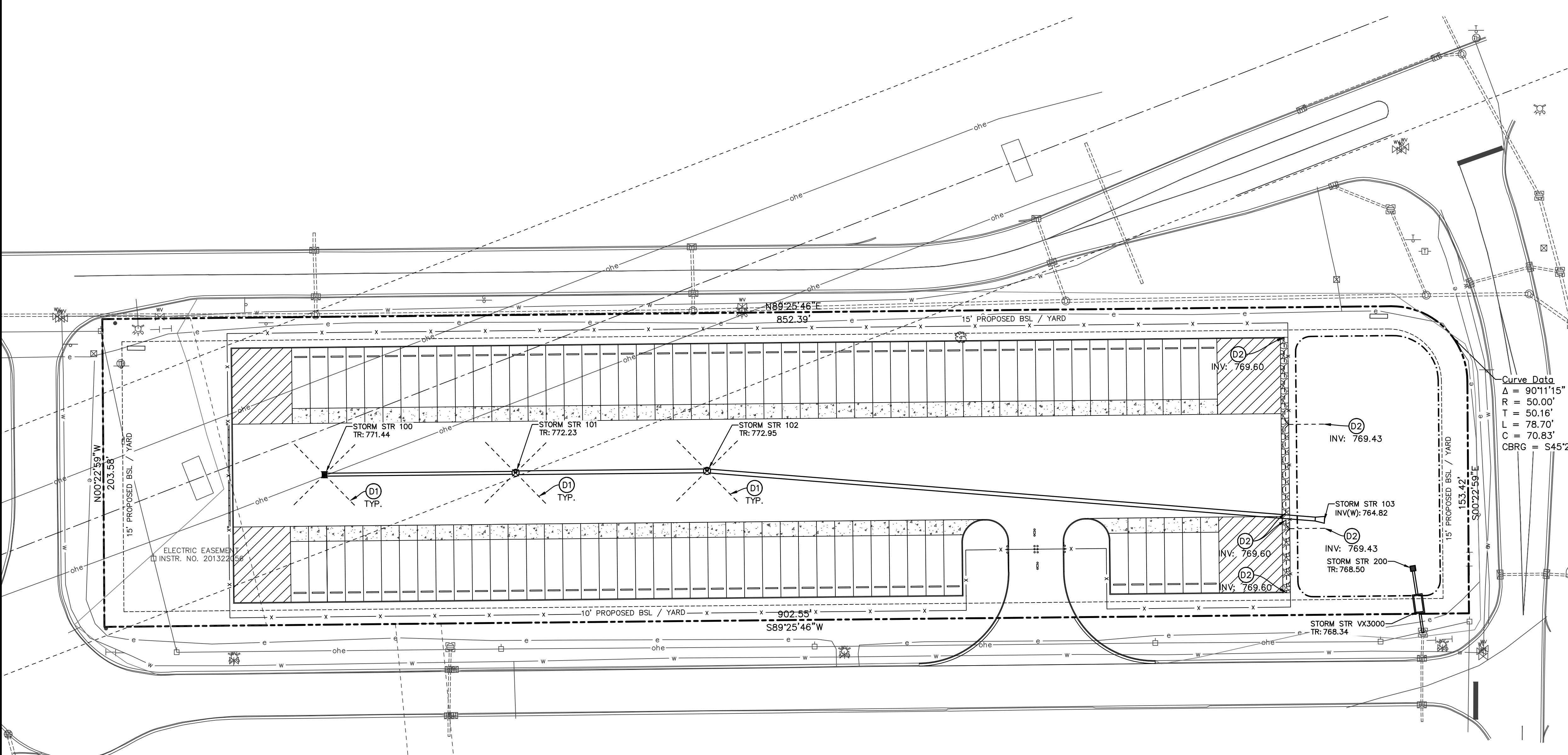
- BEEHIVE INLET
- CURB INLET
- DRAINAGE MANHOLE
- FIRE HYDRANT
- GAS MARKER SIGN
- GUY WIRE
- INLET
- LID POST
- POWER POLE SIGN
- TELEPHONE HANDHOLE SIGN
- TELEPHONE MARKER SIGN
- TELEPHONE PEDESTAL TRANSFORMER
- TREE
- WATER VALVE
- BURIED ELECTRIC LINE
- OVERHEAD ELECTRIC LINE
- BURIED FIBER OPTIC LINE
- BURIED WATER LINE
- TOP OF RIM ELEVATION
- INVERT ELEVATION
- PLASTIC PIPE
- REINFORCED CONCRETE PIPE
- CONCRETE END SECTION

**KEYNOTES**

- DRAINAGE/STORM SEWER**
- D1. PAVEMENT UNDER DRAIN
  - D2. 6" PERFORATED SUBSURFACE DRAIN (REFER TO GRAVEL LEVEL SPREADER DETAIL)

**UTILITY LEGEND**

- STORM SEWER LINE
- 4" DUAL WALL HDPE PAVEMENT UNDERDRAIN @ 0.25% MIN. SLOPE



**Curve Data**  
 $\Delta = 90^{\circ}11'15''$   
 $R = 50.00'$   
 $T = 50.16'$   
 $L = 78.70'$   
 $C = 70.83'$   
 $CBRC = S45^{\circ}28'36''$

**Duke REALTY**

600 E. 96th Street, Suite 100  
 Indianapolis, IN 46240  
 317.808.6000 • 317.808.6797 (fx)

CIVIL ENGINEER

**AMERICAN STRUCTUREPOINT INC.**

7260 Shadeland Station | Indianapolis, Indiana 46256  
 TEL 317.547.5880 | FAX 317.543.0270  
 www.structurepoint.com

Professional Seal

**HOME DEPOT**

**TRAILER PARKING**

10627 REEVES ROAD  
 PLAINFIELD, INDIANA

**ISSUANCES**

#	Description	Date

**DRAWING INFORMATION**

Scale:	1" = 40'
Date:	08.08.2018
Checked By:	NRE
Drawn By:	KAC
Duke Realty Job #:	---
A/E Job #:	2018.01279

**DRAWING / SHEET TITLE**

**UTILITY PLAN**

SHEET NUMBER

**C400**

- GENERAL NOTES:**
- CONTRACTOR SHALL PROTECT AND NOT DESTROY THE PROPERTY CORNER MONUMENTS DURING CONSTRUCTION.
  - CONTRACTOR TO VERIFY LOCATION, SIZE AND DEPTH OF EXISTING UTILITIES PRIOR TO COMMENCING ANY CONSTRUCTION. CONTACT ENGINEER IF VARIATION EXISTS.
  - SEE SHEET C002 GENERAL NOTES FOR MORE INFORMATION.

**UTILITY CONTACTS**

UTILITY	COMPANY	CONTACT	PHONE NO.
CABLE TELEVISION	BRIGHTHOUSE NETWORKS	CONSTRUCTION DEPART.	(317) 972-9700
ELECTRIC	HENDRICKS COUNTY COOP	STEVE KNOTTIS	(317) 745-5473
	VECTREN	GERRY JONES	(317) 718-3604
SANITARY SEWER	PLAINFIELD SEWER DEPARTMENT	TIM BELCHER	(317) 839-2516
STORM SEWER	HENDRICKS COUNTY	SURVEYORS OFFICE	(317) 745-9237
TELEPHONE	AT&T	MICHAEL CARTER	(317) 722-2299
WATER	PLAINFIELD WATER DEPARTMENT	JASON CASTETTER	(317) 839-3490

(REV. 07/28/18)

**!! CAUTION !!**

THE LOCATIONS OF ALL EXISTING UNDERGROUND UTILITIES SHOWN ON THIS PLAN ARE BASED UPON ABOVE GROUND EVIDENCE (including, but not limited to, manholes, inlets, valves, and marks made upon the ground by others) AND ARE SPECULATIVE IN NATURE. THERE MAY ALSO BE OTHER EXISTING UNDERGROUND UTILITIES FOR WHICH THERE IS NO ABOVE GROUND EVIDENCE OR FOR WHICH NO ABOVE GROUND EVIDENCE WAS OBSERVED. THE EXACT LOCATIONS OF SAID EXISTING UNDERGROUND UTILITIES SHALL BE VERIFIED BY THE CONTRACTOR PRIOR TO ANY AND ALL CONSTRUCTION.

CALL TOLL FREE  
 \*811\* OR 1-800-382-5544  
 - INDIANA UNDERGROUND -