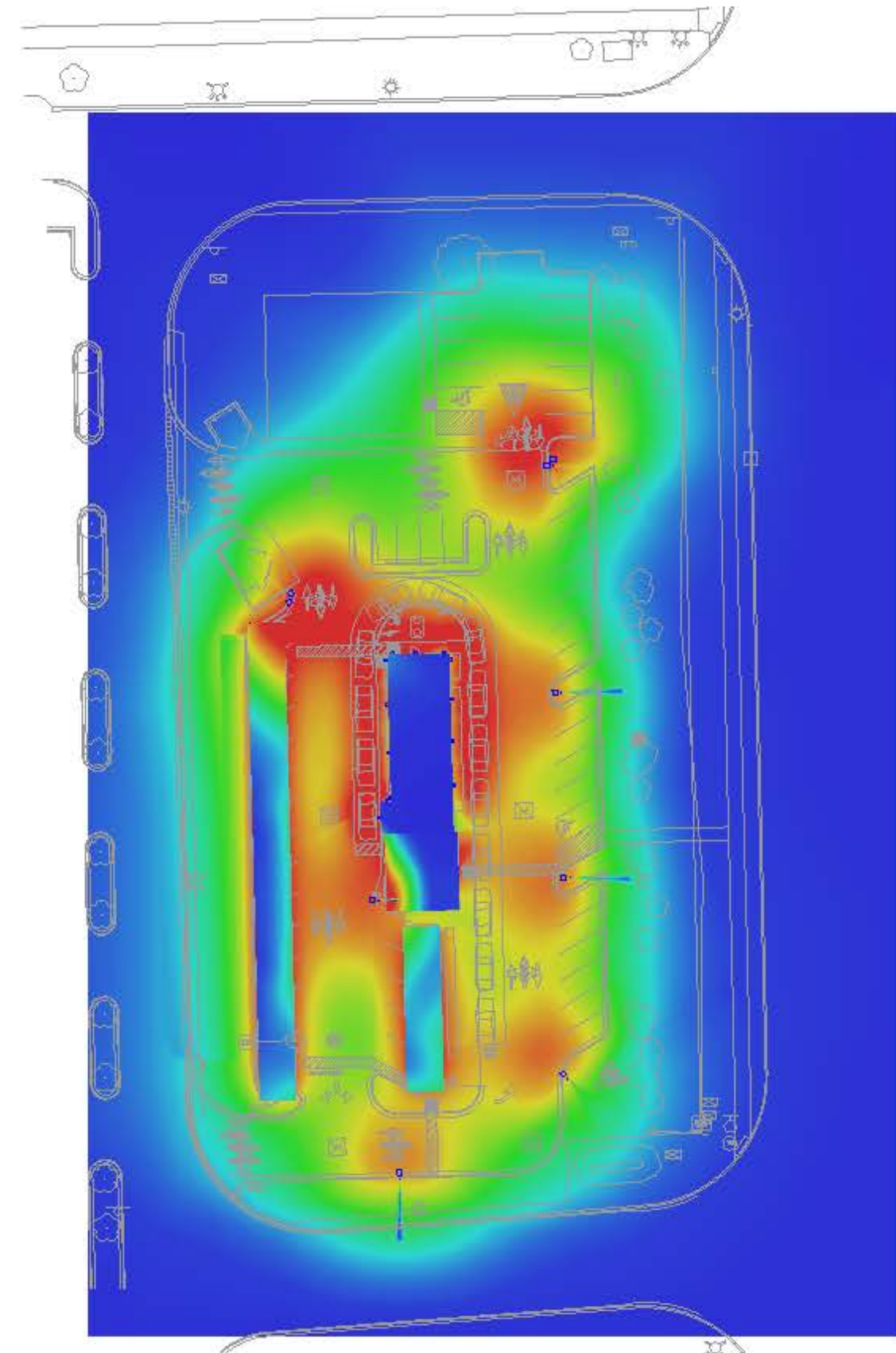


Wattage								
Symbol	Label	Quantity	Manufacturer	Catalog Number	Description	Lumens	Light Loss Factor	
□	A1	4	OPTEC LED LIGHTING	OLA1-230-UNV-50-3	LED AREA SERIES LARGE 230W 5000K TYPE 3 MOUNTED TO 25'-0" POLE WITH 3'-0" BASE	32471	0.95	
□	A2	1	OPTEC LED LIGHTING	OLA1-230-UNV-50-4	LED AREA SERIES LARGE 230W 5000K TYPE 4 MOUNTED TO 25'-0" POLE WITH 3'-0" BASE	30820	0.95	
□	A2-2	2	OPTEC LED LIGHTING	OLA1-230-UNV-50-4	LED AREA SERIES LARGE 230W 5000K TYPE 4 MOUNTED TO 25'-0" POLE WITH 3'-0" BASE	30820	0.95	
—	B8	20	MERCURY LIGHTING	MM-232-OCT.8T-ELB-UNI-ALUM	8' ALUMINUM STRIP - 4 LED T8 LAMPS MOUNTED TO BOTTOM OF CANOPY	2350	0.72	
□	C1	13	OPTEC LED LIGHTING	OLWP3L-050-1200-UNV-50-4	LED WALLPACK SERIES 3 / LARGE, 50W, 5000K MOUNTED PER CURRENT ELEVATIONS	5149	0.95	
□	C2	2	OPTEC LED LIGHTING	OLWP3S-020-UNV-50-4	LED WALLPACK SERIES 3 / SMALL, 20W, 5000K MOUNTED PER CURRENT ELEVATIONS	1830	0.95	
○	D	2	HUBBELL INDUSTRIAL	LWL-P-30-L-U-SK-P-WH	PENDANT MOUNTED 9'-6" AFG	4715	0.95	

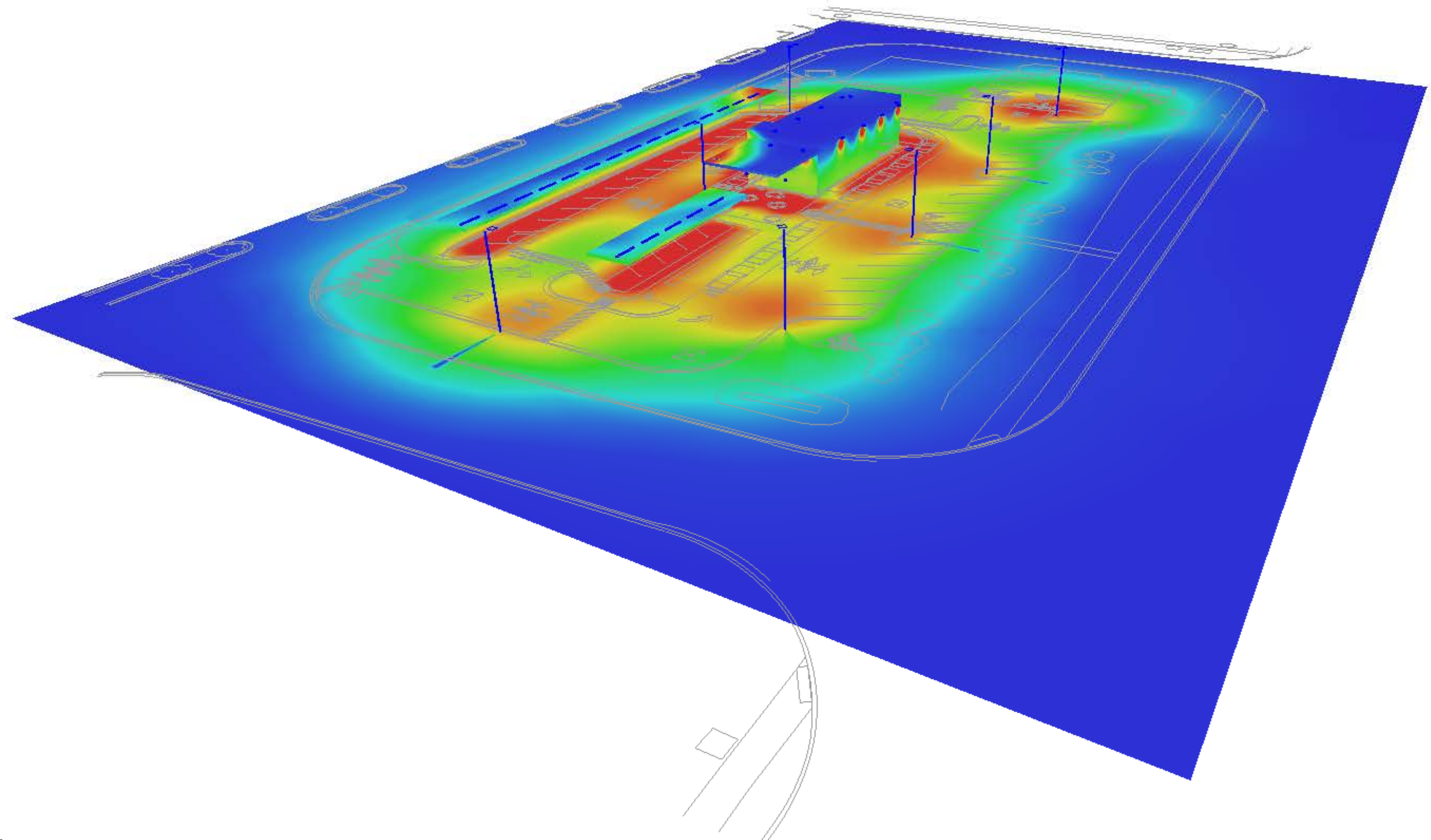
Statistics					
Description	Symbol	Avg	Max	Min	Max/Min
FRONT CANOPY	◇	15.1 fc	25.2 fc	6.1 fc	4.1:1
PARKING CANOPY - LARGE	■	16.0 fc	19.4 fc	9.8 fc	2.0:1
PARKING CANOPY - SMALL	□	15.7 fc	19.9 fc	10.4 fc	1.9:1
RIGHT OF WAY	✕	0.1 fc	1.4 fc	0.0 fc	N/A
SITE ALL	+	4.0 fc	29.2 fc	0.0 fc	N/A

**Plan View**  
Scale - 1" = 20ft

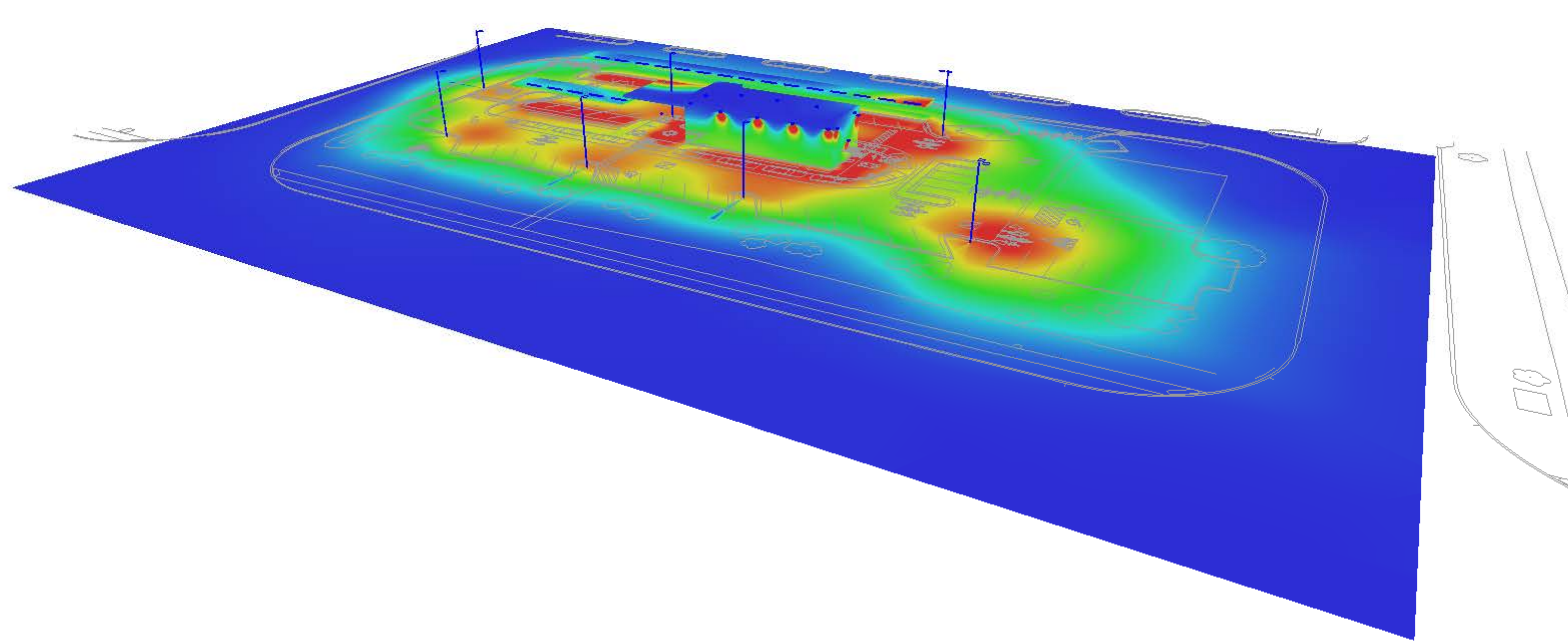




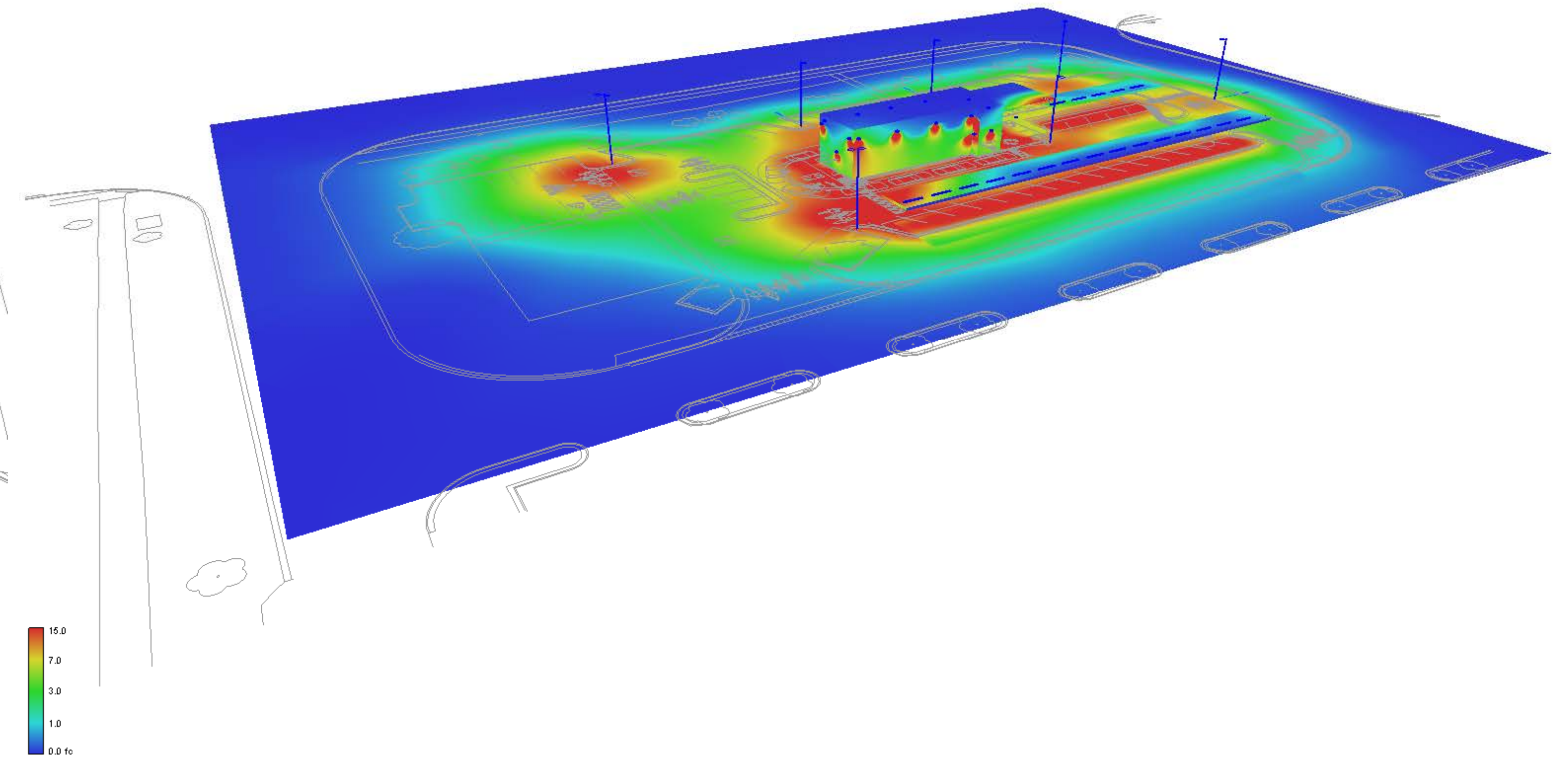
View #1



View #2



View #3



View #4