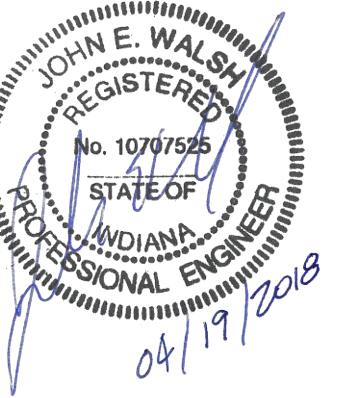




Chick-fil-A

Chick-fil-A
5200 Buffington Road
Atlanta, Georgia 30349-2998

GBC DESIGN, INC.
565 White Pond Dr. Akron, OH 44320-1123
Phone 330-836-0228 Fax 330-836-5782



CHICK-FIL-A
PLAINFIELD FSU
2687 EAST MAIN STREET
PLAINFIELD, IN 46168

FSU# 01405

REVISION SCHEDULE	NO.	DATE	DESCRIPTION

GBC PROJECT #	50138R
PRINTED FOR	Permit
DATE	3/22/18
DRAWN BY	BAW

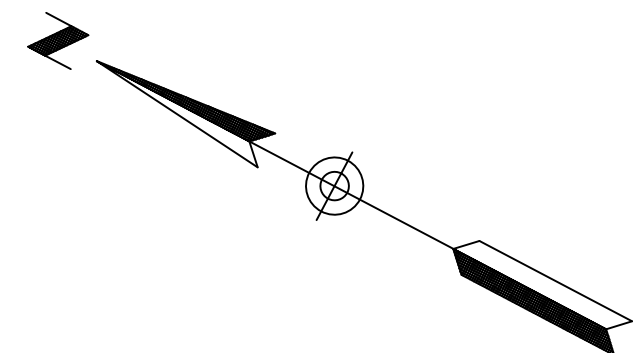
Information contained on this drawing and in all digital files produced for above named project may not be reproduced in any manner without express written or verbal consent from authorized project representatives.

SHEET
EXISTING
CONDITIONS
PLAN

SHEET NUMBER
C-100

**EX. STORM SEWER
STRUCTURE SCHEDULE**

- EX. CATCH BASIN
TOP 783.92
INV. 780.42, 12" NE
INV. 780.12, 18" SE
- EX. CURB INLET
TOP 784.01
INV. 779.71, 18" NW
INV. 779.71, 21" SW
- EX. STM. M.H.
TOP 781.96
INV. 776.45, 15" SE
INV. 776.25, 24" W
INV. 777.15, 21" NE
INV. 777.15, 12" N
- EX. CURB INLET
TOP 780.18
INV. 776.98, 12" N
- EX. STM. M.H.
TOP 780.52
INV. 773.45, 48" NW
INV. 772.15, 48" SE
INV. 776.45, 21" NW
INV. 773.00, 24" E
- EX. CURB INLET
TOP 780.36
INV. 776.56, 24" SW
INV. 776.56, 21" SE
- EX. CURB INLET
TOP 779.86
INV. 776.66, 15" NW
- EX. CURB INLET
TOP 786.59
INV. 781.99, 12" NW
- EX. CURB INLET
TOP 786.99
INV. 782.49, 12" NW
- EX. STM. M.H.
TOP 785.92
INV. 776.92, 48" N
INV. 775.72, 48" SE
INV. 781.92, 15" NE
- EX. CURB INLET
TOP 783.90
INV. 780.60, 12" SE
- EX. CATCH BASIN
TOP 784.20
INV. 780.20, 12" NW
INV. 780.20, 12" SW
- EX. STM. M.H.
TOP 782.80
INV. 778.80, 12" N
INV. 778.40, 12" S
INV. 778.50, 12" E
INV. 779.80, 10" NE
- EX. CURB INLET
TOP 783.61
INV. 779.71, 12" S
- EX. CURB INLET
TOP 782.75
INV. 778.85, 12" NE
INV. 778.85, 12" W



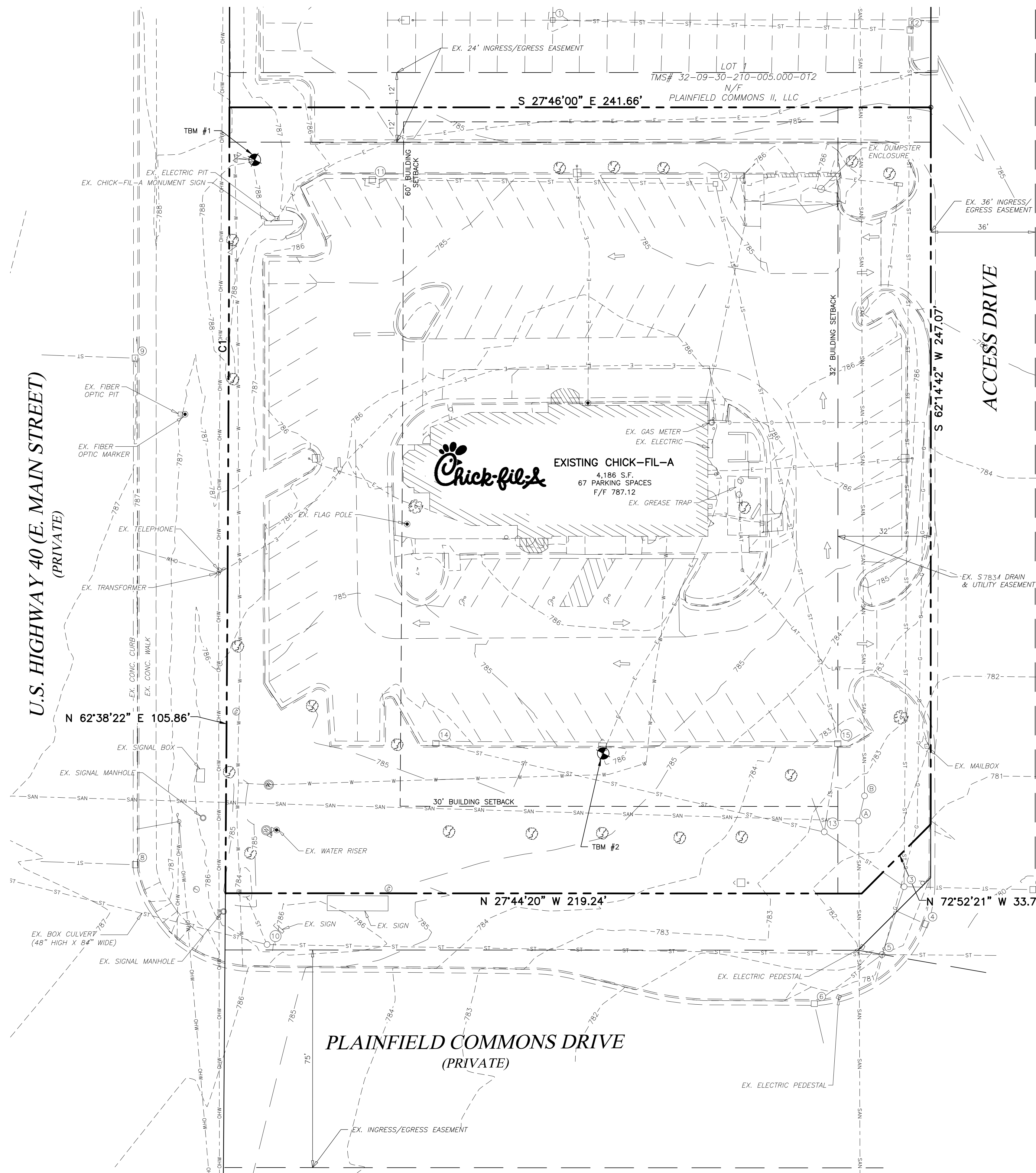
SCALE: 1" = 20'

LEGEND

- EX. FIRE HYDRANT
- EX. VALVE
- EX. MANHOLE
- EX. CATCH BASIN
- EX. BOX INLET
- EX. LIGHT POLE
- EX. DECORATIVE LAMP
- EX. POWER POLE
- EX. TREE
- EX. TELEPHONE LINE
- EX. ELECTRIC LINE
- EX. OVERHEAD WIRE
- EX. GAS LINE
- EX. SANITARY SEWER
- EX. STORM SEWER
- EX. WATER LINE
- EX. CURB

**EX. SANITARY SEWER
STRUCTURE SCHEDULE**

- EX. SAN. M.H.
TOP 782.74
INV. 771.24, 10" E
INV. 771.14, 10" SW
INV. 771.24, 8" NW
- EX. SAN. M.H.
TOP 782.73
INV. 771.43, 10" NE
INV. 771.13, 10" W



CONTRACTOR RESPONSIBLE TO FIELD VERIFY LOCATIONS AND ELEVATIONS OF EXISTING UTILITY TIE-INS AS SHOWN ON SITE PLANS (SANITARY, STORM, WATER, GAS, ELECTRIC, PHONE, ETC.) PRIOR TO THE START OF CONSTRUCTION. CONTACT ALLAN WILEY AT GBC DESIGN, INC., 330-836-0228, WITH ANY CONCERNS PRIOR TO THE START OF CONSTRUCTION. CONTRACTOR TO VERIFY THE THICKNESS OF ANY OFF-SITE PAVEMENT (ASPHALT AND CONCRETE) AND SIDEWALK SO THE RESTORATION WORK IS INCLUDED IN THE BID.