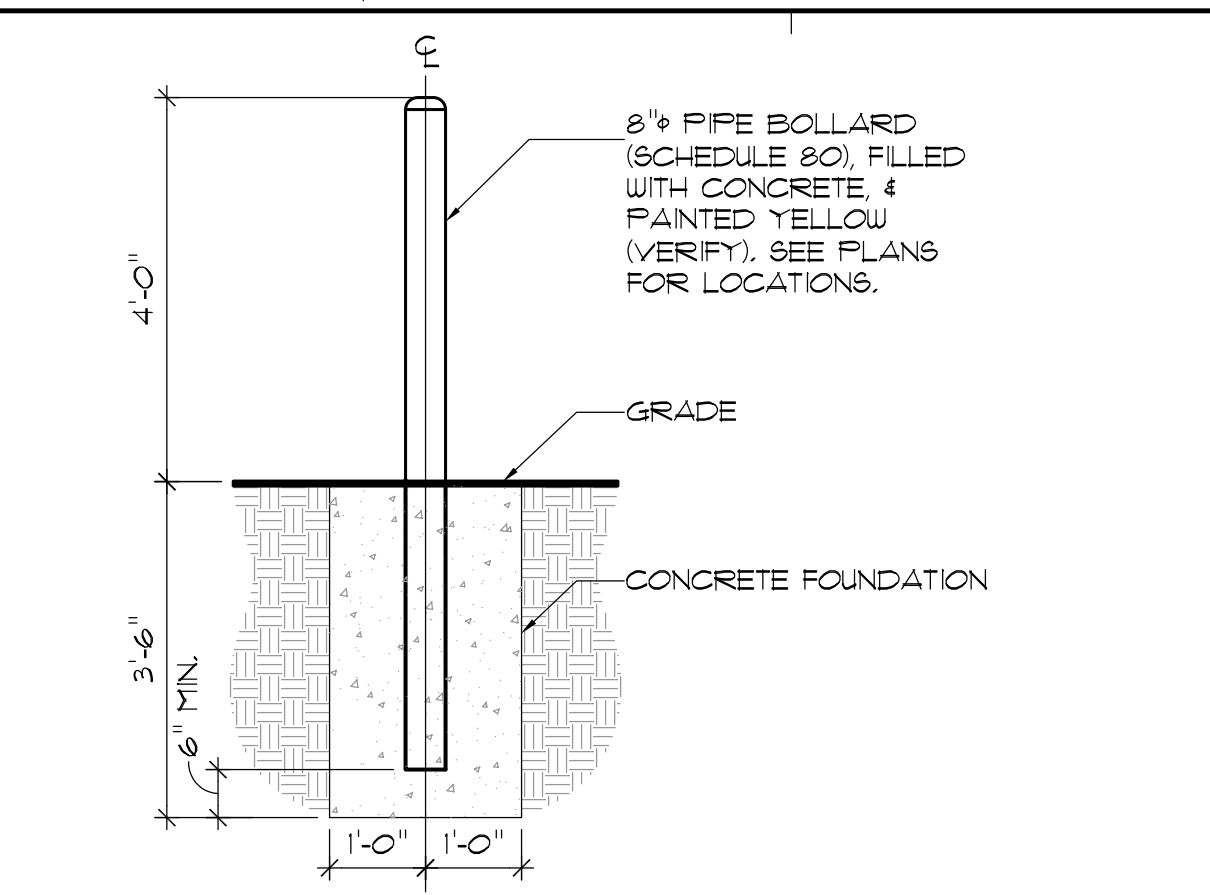


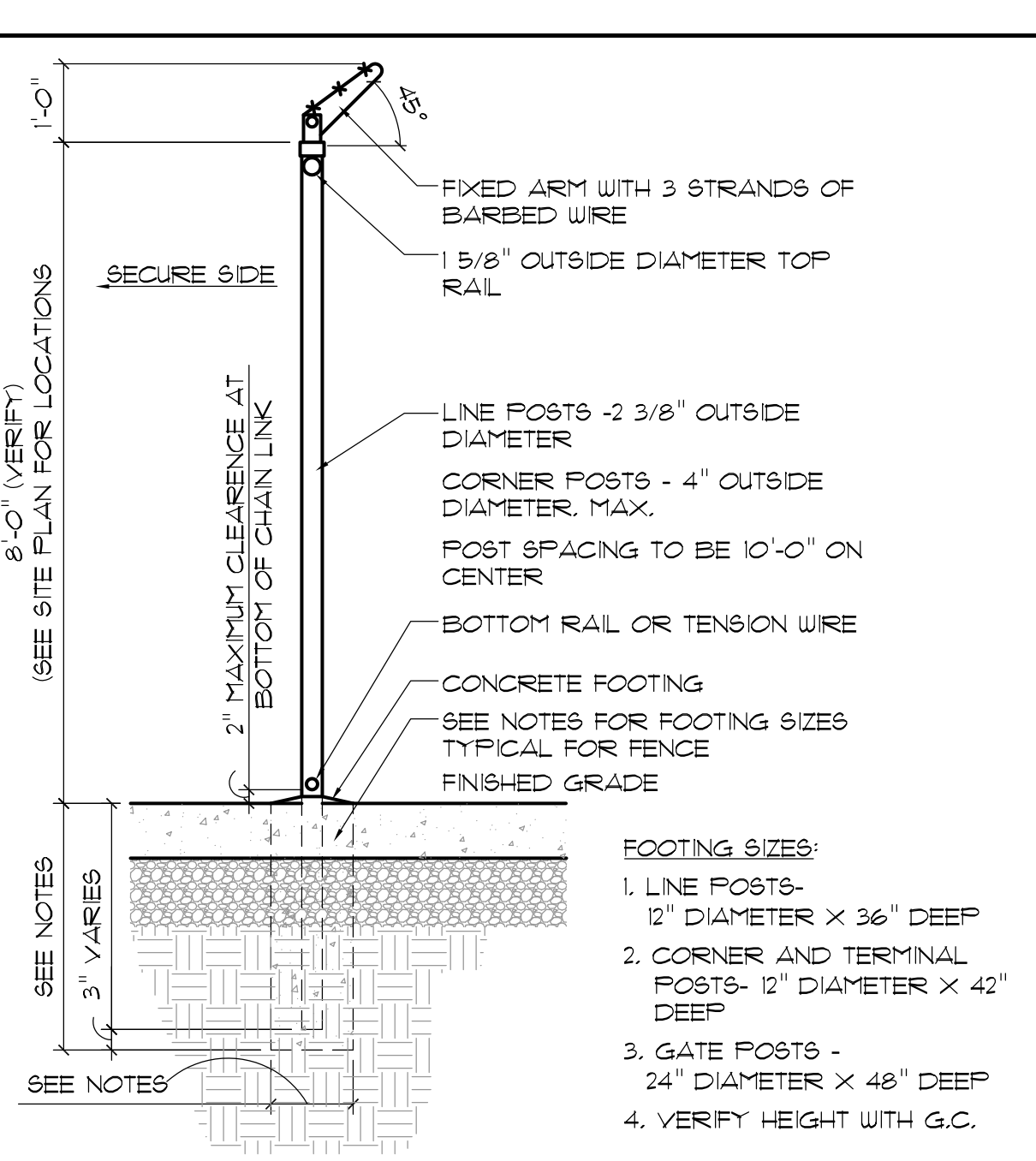
GENERAL NOTES:

- FOR ADDITIONAL INFORMATION SEE SHELL CONSTRUCTION DRAWINGS.
- EXTENT OF PROPOSED TENANT IS REPRESENTED BY THE SHADED AREAS.

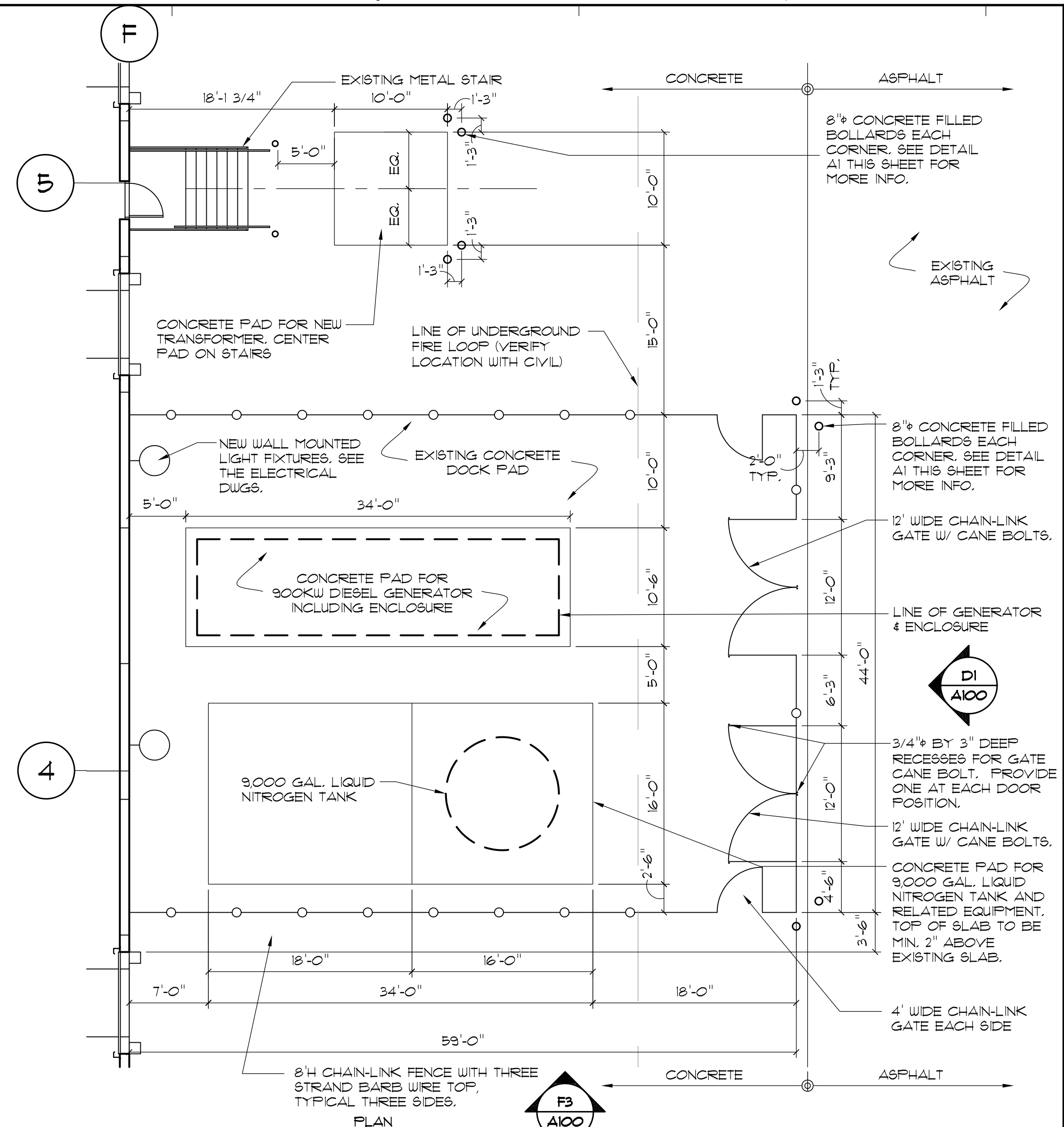
A1 BOLLARD DETAIL
 SCALE: 1/2" = 1'-0"



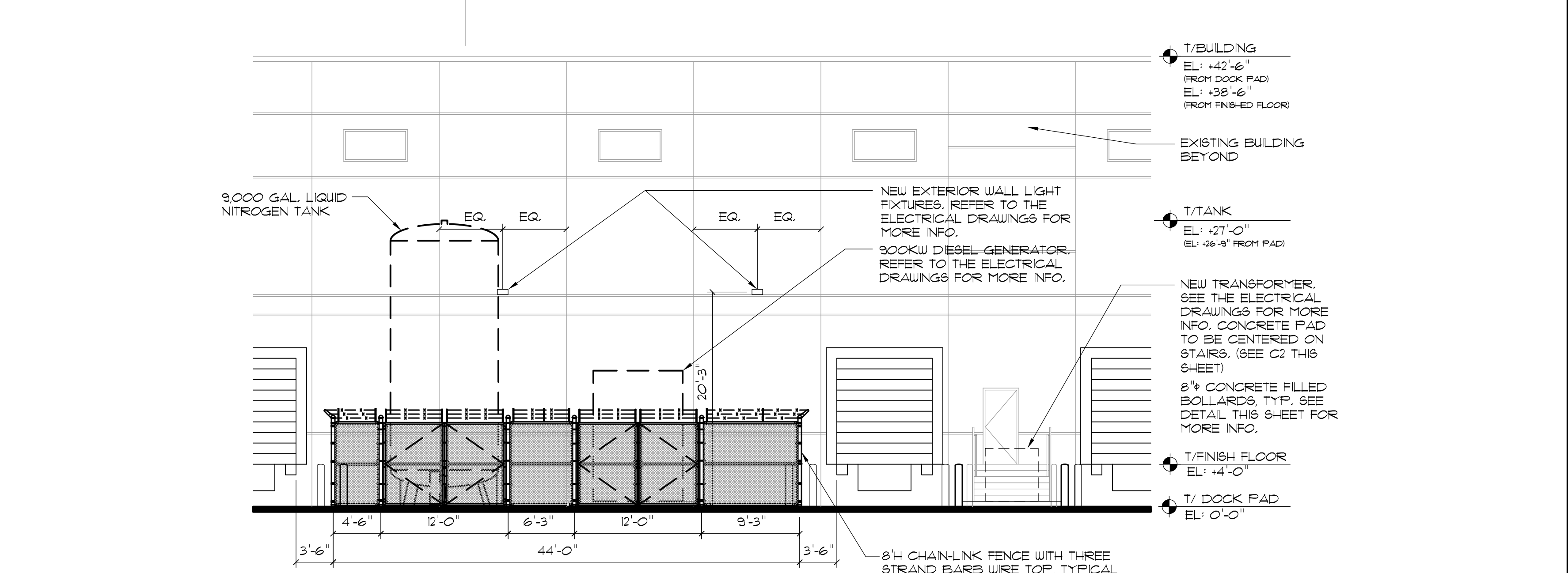
C1 FENCE SECTION
 SCALE: 1/2" = 1'-0"



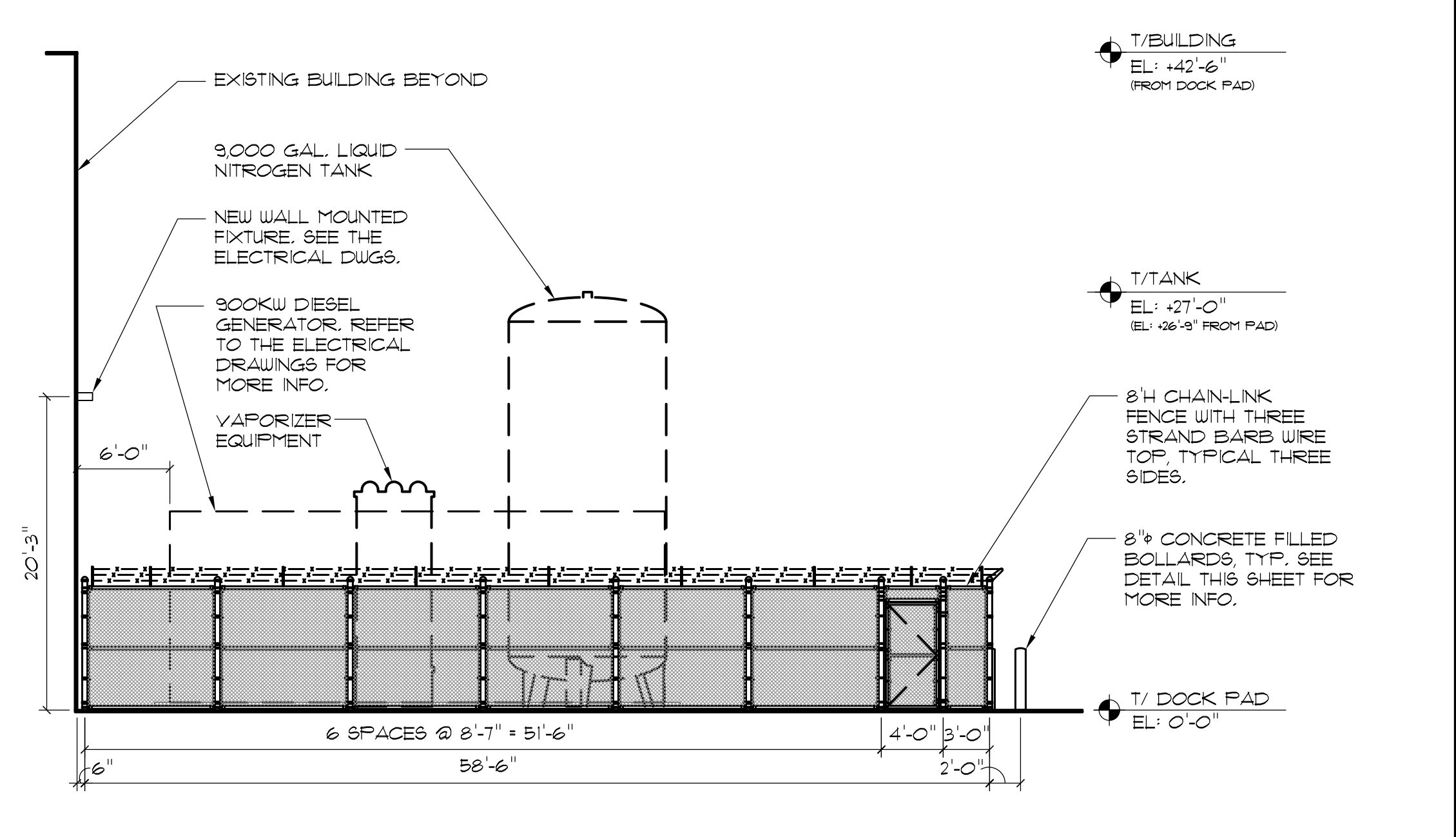
C2 ENCLOSURE PLAN
 SCALE: 1/8" = 1'-0"



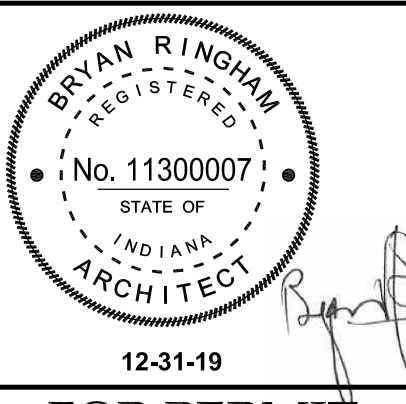
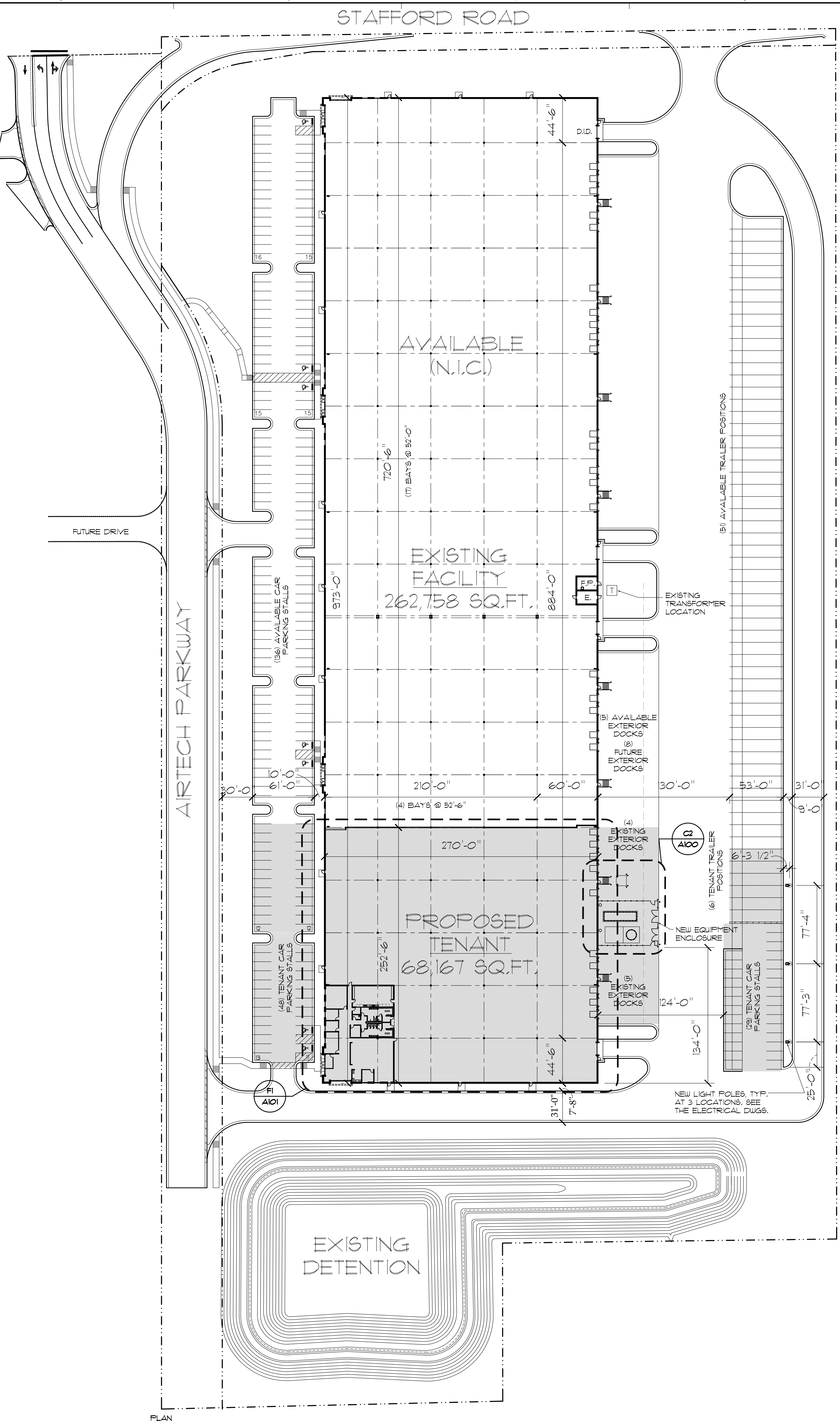
D1 ENCLOSURE EAST ELEVATION
 SCALE: 1/8" = 1'-0"



F2 ENCLOSURE SOUTH ELEVATION
 SCALE: 1/8" = 1'-0"



FB SITE PLAN
 SCALE: 1" = 50'-0"



12-31-19

FOR PERMIT

no.	date	revision description
-	03-01-19	ISSUED FOR PERMIT
-	02-27-19	100% SET ISSUED FOR REVIEW
-	02-22-19	35% PROGRESS SET FOR REVIEW

date: 02-15-19
 drawn:
 checked:

TENANT IMPROVEMENTS
LIFENET HEALTH
 845 AIRTECH PARKWAY
 PLAINFIELD, INDIANA 46231

EXISTING SITE PLAN

job no. 18248
 sheet no. A100