



CSO
 8831 Keystone Crossing, Indianapolis, IN 46240
 317.848.7800 | CSOinc.net
 © 2015 CSO Architects, Inc. All Rights Reserved

PROJECT:
**PLAINFIELD COMMUNITY SCHOOL CORPORATION
 GUILFORD ELEMENTARY SCHOOL**
 6440 S COUNTY RD 600 E, PLAINFIELD, IN 46168

SCOPE DRAWINGS:
 These drawings indicate the general scope of the project. The drawings are not intended to be used for the design of structural, mechanical and electrical systems. The drawings do not necessarily indicate or describe all work required for the performance and completion of the project. On the basis of the general scope indicated on these drawings, the contractor shall furnish all items required for the proper installation and completion of the work.

REVISIONS:

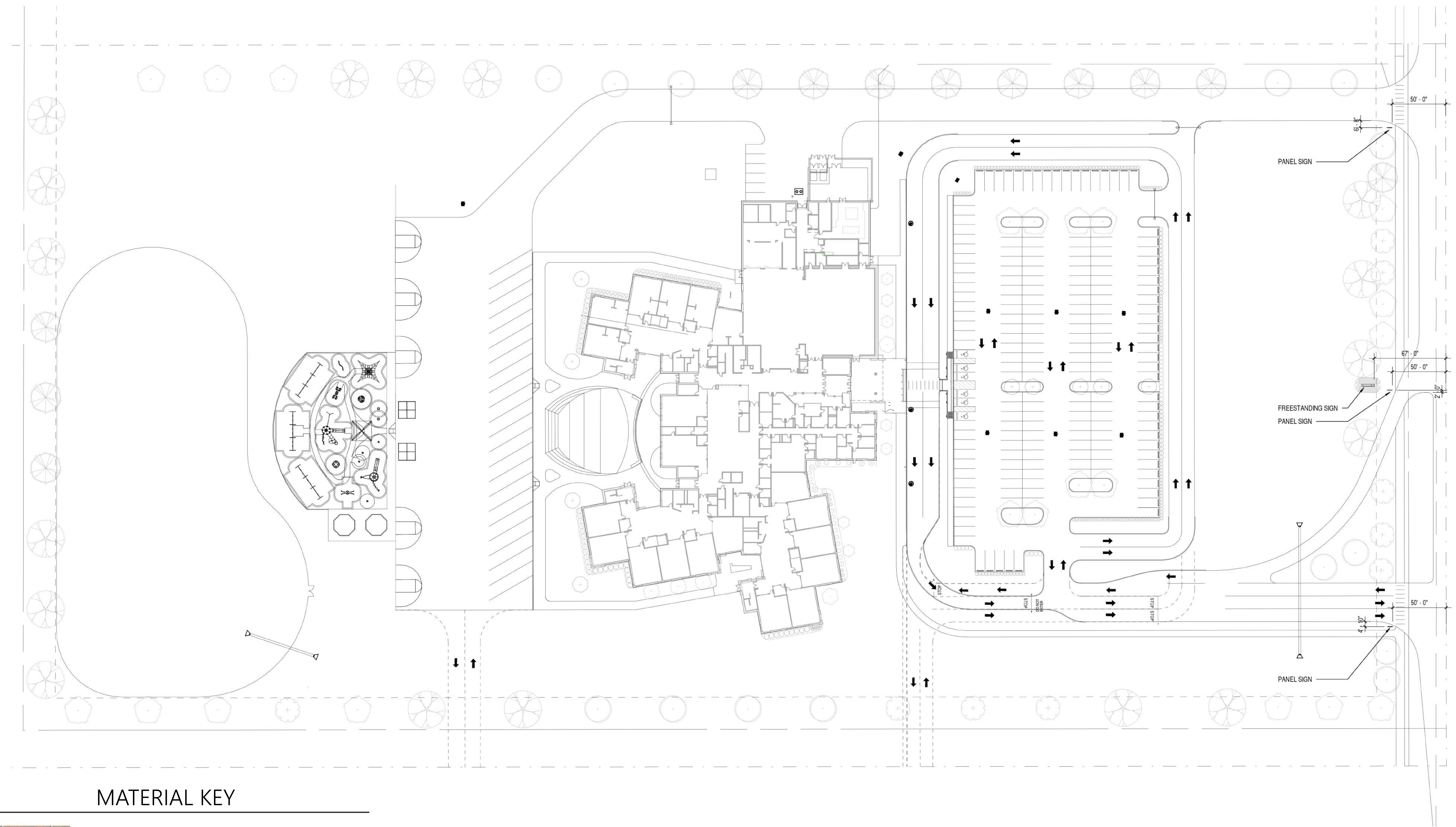
ISSUE DATE	DRAWN BY	CHECKED BY
05/17/19	CTS	BCH

DRAWING TITLE:
MONUMENT SIGN AND SITE SIGNAGE

CERTIFIED BY:
DESIGN DEVELOPMENT
 NOT FOR CONSTRUCTION

DRAWING NUMBER:
A1000

PROJECT NUMBER:
18032



MATERIAL KEY



BRICK
(QUAKER VELOUR)



BRICK
(CENTURY REDS)



BRICK
(RUBIGO RED VELOUR)

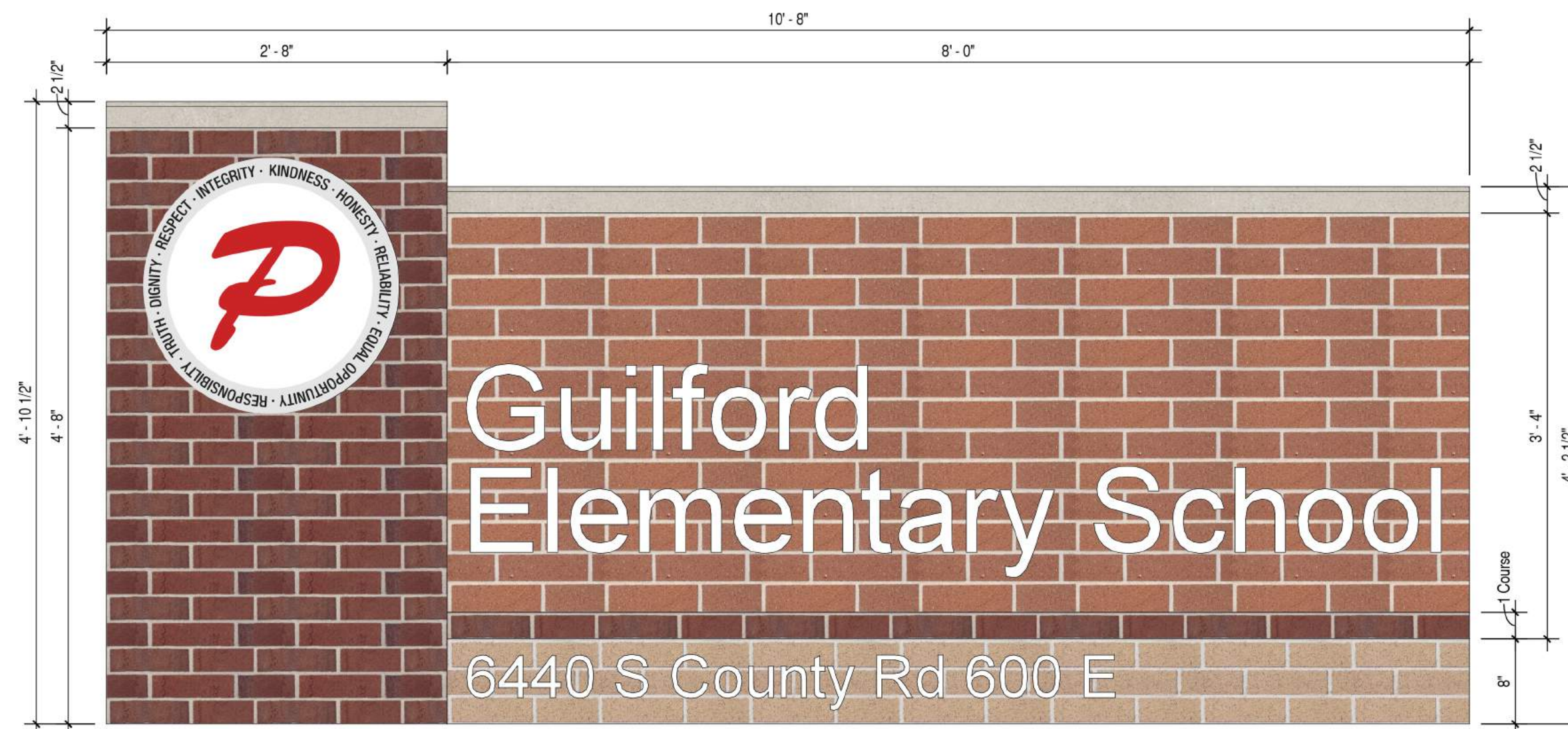


ANODIZED ALUMINUM
(CLEAR)

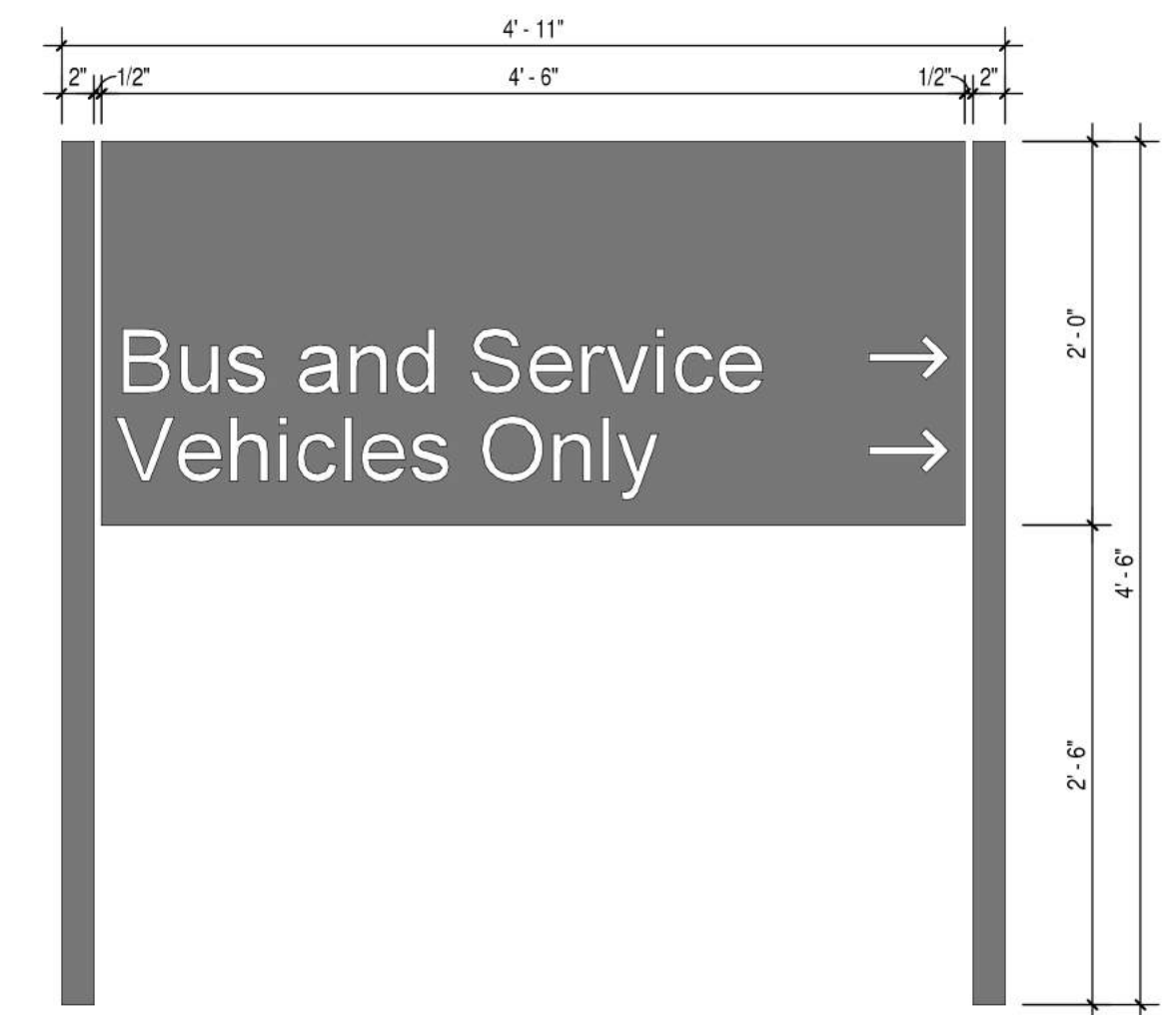


LIMESTONE

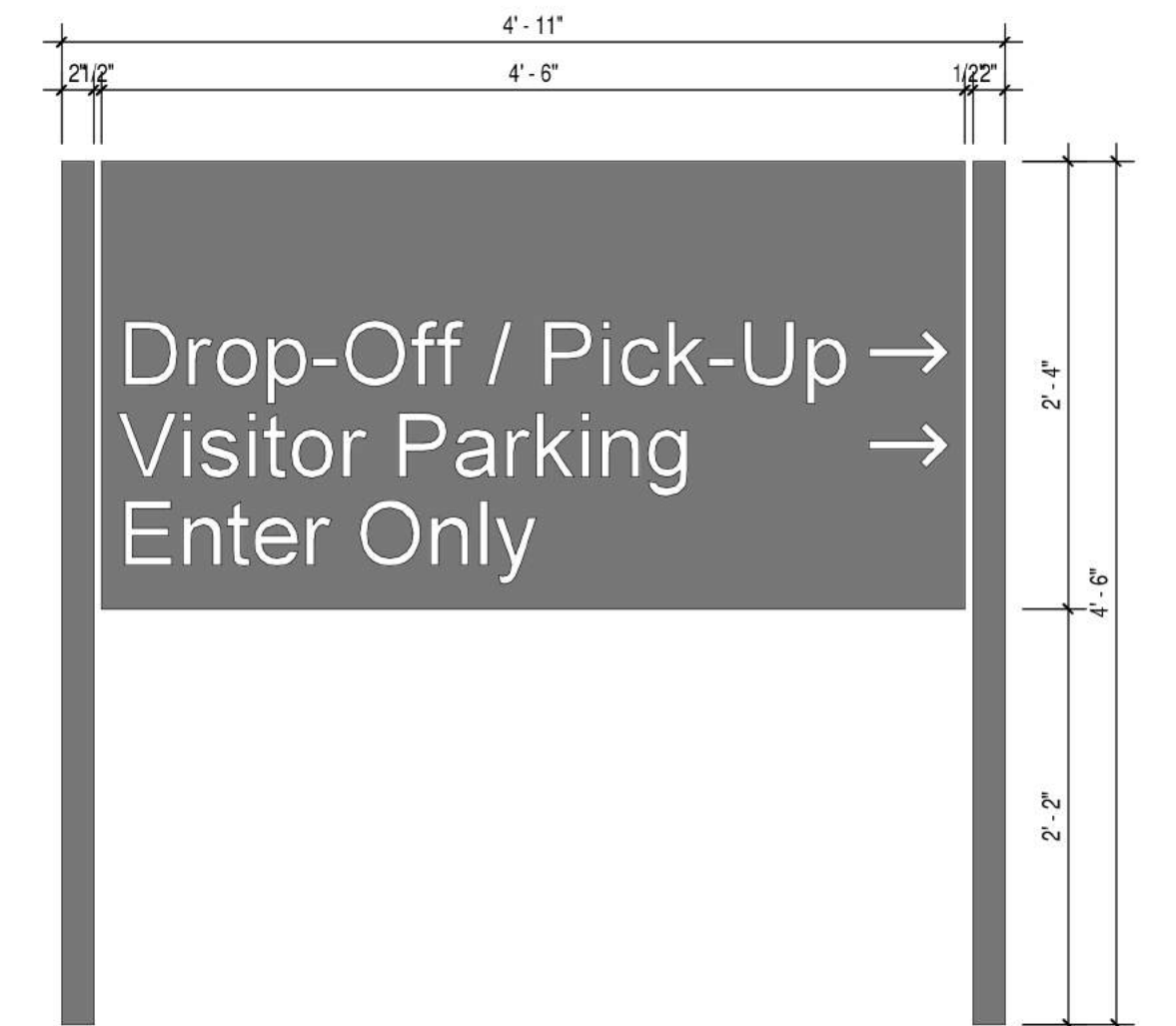
5 SITE SIGNAGE PLAN
 SCALE: 1" = 50'-0"



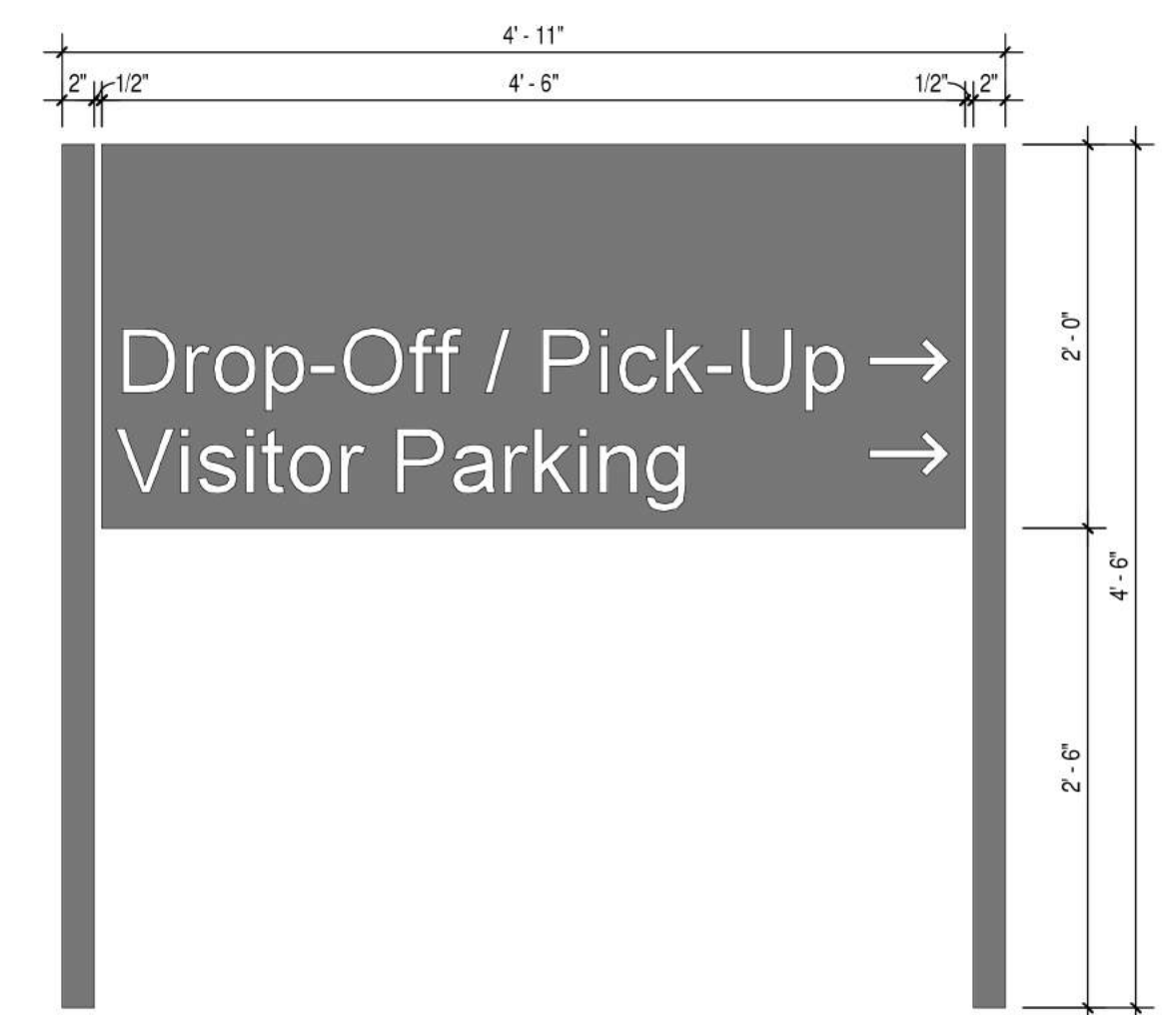
4 MONUMENT SIGN
 SCALE: 1" = 1'-0"



3 PANEL SIGN
 SCALE: 1" = 1'-0"



2 PANEL SIGN
 SCALE: 1" = 1'-0"



1 PANEL SIGN
 SCALE: 1" = 1'-0"