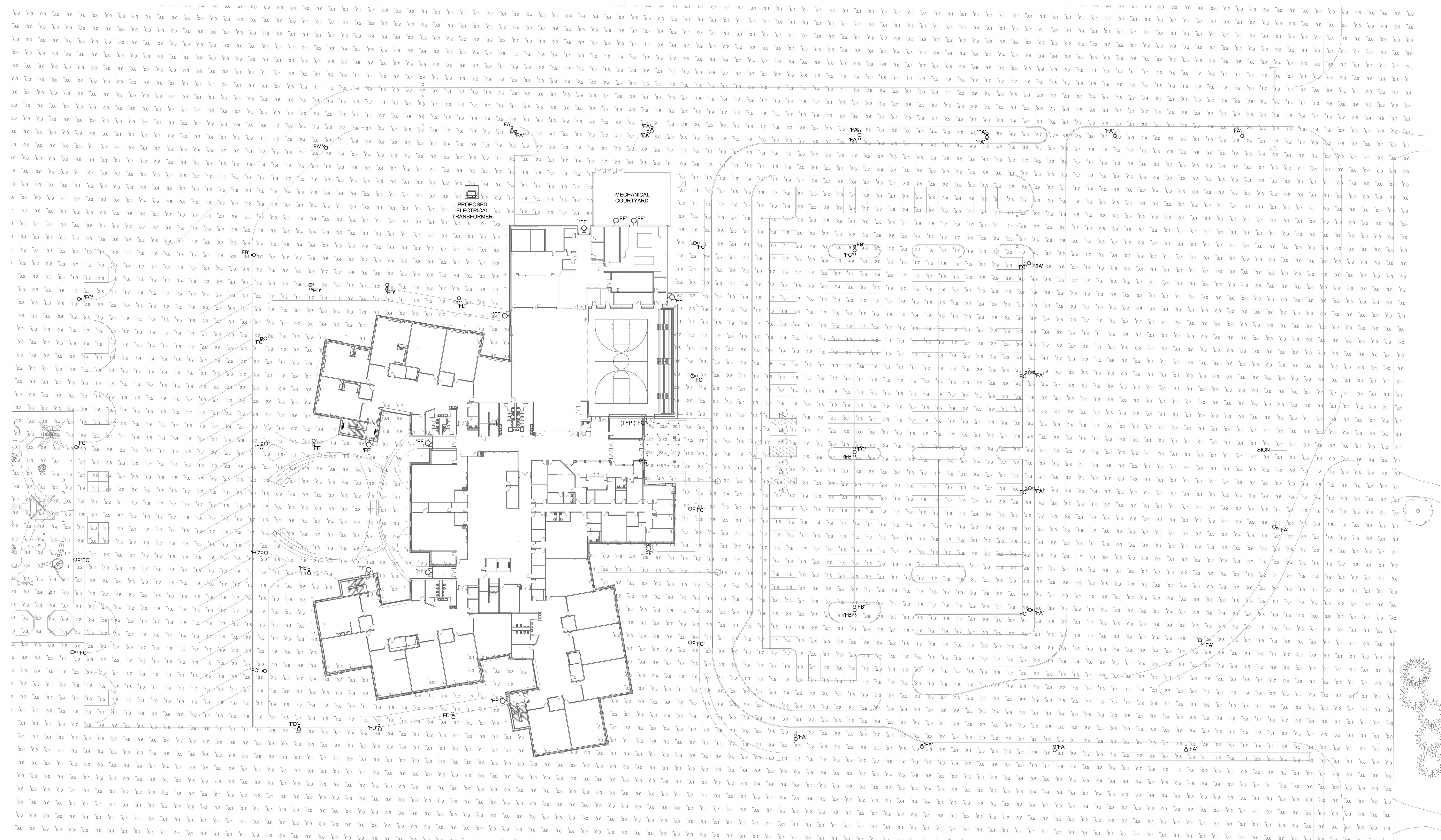


LIGHT FIXTURE SCHEDULE (EXTERIOR)

MARK	DESCRIPTION	MOUNTING	TOTAL FIXTURE WATTS	CRI	WATTS	COLOR	LUMENS	VOLTS	MANUFACTURER(S)
FA	CAST ALUMINUM 'VMX' FIXTURE WITH INTEGRAL COOLING FINS AND POWDERCOATED FINISH, TYPE II DISTRIBUTION, WET LOCATION LISTED, 30-FOOT TALL SQUARE NON-TAPERED STEEL POLE, BLACK POWDERCOAT, WITH RUST-INHIBITING INTERNAL COATING & PRIMER, FINISH TO BE SELECTED BY ARCHITECT FROM MANUFACTURER'S CATALOG OF STANDARD FINISHES.	POLE	140	70	140W/HEAD	4000K	18912/HEAD	277 V	LITHONIA DSX2 SERIES
FB	CAST ALUMINUM 'VMX' FIXTURE WITH INTEGRAL COOLING FINS AND POWDERCOATED FINISH, TYPE III DISTRIBUTION, WET LOCATION LISTED, 30-FOOT TALL SQUARE NON-TAPERED STEEL POLE, BLACK POWDERCOAT, WITH RUST-INHIBITING INTERNAL COATING & PRIMER, FINISH TO BE SELECTED BY ARCHITECT FROM MANUFACTURER'S CATALOG OF STANDARD FINISHES.	POLE	140	70	140W/HEAD	4000K	18410/HEAD	277 V	LITHONIA DSX2 SERIES
FC	CAST ALUMINUM 'VMX' FIXTURE WITH INTEGRAL COOLING FINS AND POWDERCOATED FINISH, TYPE IV DISTRIBUTION, WET LOCATION LISTED, 30-FOOT TALL SQUARE NON-TAPERED STEEL POLE, BLACK POWDERCOAT, WITH RUST-INHIBITING INTERNAL COATING & PRIMER, FINISH TO BE SELECTED BY ARCHITECT FROM MANUFACTURER'S CATALOG OF STANDARD FINISHES.	POLE	140	70	140W/HEAD	4000K	18552/HEAD	277 V	LITHONIA DSX2 SERIES
FD	CAST ALUMINUM 'VMX' (PEDESTRIAN), FIXTURE WITH INTEGRAL COOLING FINS AND POWDERCOATED FINISH, TYPE II DISTRIBUTION, WET LOCATION LISTED, 12-FOOT TALL SQUARE NON-TAPERED STEEL POLE, BLACK POWDERCOAT, WITH RUST-INHIBITING INTERNAL COATING & PRIMER, FINISH TO BE SELECTED BY ARCHITECT FROM MANUFACTURER'S CATALOG OF STANDARD FINISHES.	POLE	34	70	34W	4000K	2539	277 V	LITHONIA DSX0 SERIES
FE	CAST ALUMINUM 'VMX' (PEDESTRIAN), FIXTURE WITH INTEGRAL COOLING FINS AND POWDERCOATED FINISH, TYPE IV DISTRIBUTION, WET LOCATION LISTED, 12-FOOT TALL SQUARE NON-TAPERED STEEL POLE, BLACK POWDERCOAT, WITH RUST-INHIBITING INTERNAL COATING & PRIMER, FINISH TO BE SELECTED BY ARCHITECT FROM MANUFACTURER'S CATALOG OF STANDARD FINISHES.	POLE	34	70	34W	4000K	2569	277 V	LITHONIA DSX0 SERIES
FF	LED WALL SCONCE, DIE-CAST ALUMINUM HOUSING, INTEGRAL HEAT SINK, WET LOCATION LISTED, FINISH TO BE SELECTED BY ARCHITECT FROM MANUFACTURER'S CATALOG OF STANDARD FINISHES.	SURFACE WALL	49	70	49W	4000K	6200	277 V	LITHONIA KAXW SERIES
FG	OPEN DOWNLIGHT, 6-INCH DIAMETER APERTURE, CLEAR SEMI-SPECULAR REFLECTOR, SELF FLANGED, 0-10V DIMMING TO 10-PERCENT, NON-IC RATED, WET LOCATION LISTED.	RECESSED	27	80	27W	4000K	2500	277 V	ALPHABET ECONU 6RD SERIES

LIGHTING LEVELS INDICATED ARE AT GROUND LEVEL



SITE PLAN - LIGHTING PHOTOMETRICS
SCALE: 1" = 30'-0"
NORTH



CSO
8831 Keystone Crossing, Indianapolis, IN 46240
317.646.7800 | cso@csnet.com
© 2015 CSO Architects, Inc. All Rights Reserved.

R.E. Dimond
and Associates, Inc.
Consulting Engineers
11111 N. Meridian, Indianapolis, IN 46240
Phone: 317.571.8827
Email: rd@redimond.com

PROJECT:
**PLAINFIELD COMMUNITY SCHOOL CORPORATION
GUILFORD ELEMENTARY SCHOOL**
6440 S COUNTY RD 600 E, PLAINFIELD, IN 46168

SCOPE DRAWINGS:
These drawings indicate the general scope of the project in accordance with the contract documents. The construction of all electrical, mechanical and structural systems shall be in accordance with the applicable codes and standards. The drawings do not constitute a contract. The contractor shall verify all dimensions and conditions of the site prior to construction. The contractor shall be responsible for obtaining all necessary permits and approvals from the appropriate authorities. The contractor shall be responsible for protecting all existing utilities and structures on the site. The contractor shall be responsible for maintaining access to all adjacent properties at all times. The contractor shall be responsible for restoring the site to its original condition or better upon completion of the project.

REVISIONS:
DEVELOPMENT PLAN SUBMISSION (NOT FOR CONSTRUCTION)

ISSUE DATE: 05/23/2019
DRAWN BY: JPS
CHECKED BY: DEW

DRAWING TITLE:
SITE PLAN - LIGHTING PHOTOMETRIC

CERTIFIED BY:
E-100
PROJECT NUMBER: 18032